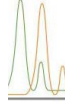




**Marin Analytics**  
250 BEL MARIN KEYS BLVD #D4 - NOVATO, CA 94949 833.321.TEST



## CERTIFICATE OF ANALYSIS

Pacifica - THICC

Sample 596-001928-089

Batch Number: 200223783

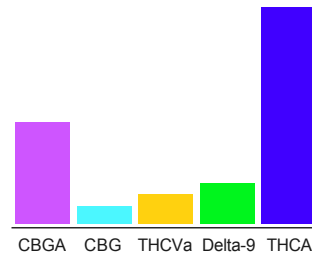
Sample Submitted: 09/04/2024 Report Date: 09/09/2024

### THCA Gummies - Guava Spot

Material: Digestable, Edible



#### Cannabinoid Profile



#### Cannabinoid Profile

**0.23 %**

Delta-9-THC

**ND**

CBD

**22.9 %**

THCA

Cannabinoid	%wt	mg/g
CBGA	0.701	7.01
CBG	0.189	1.89
THCVa	0.201	2.01
Delta-9-THC	0.232	2.32
THCA	22.9	22.871
<b>Total Cannabinoids</b>	<b>26.90</b>	<b>269.0</b>
<b>Calculated Total THC</b>	<b>22.72</b>	<b>227.15</b>
<b>Calculated CBD Yield</b>	<b>0.00</b>	<b>0.00</b>

Calculated Total THC = Delta-9-THC + 0.877 \* THCA

Calculated Maximum CBD Yield = CBD + 0.877 \* CBDA

**Marin Analytics, LLC**  
250 Bel Marin Keys Blvd, Suite D4  
Novato, CA 94949

833-321-TEST / info@marinanalytics.com

**Mike Clemmons**  
Lab Manager

This sample has been tested by Marin Analytics, LLC using valid testing methodologies and a quality system. Values reported relate only to the sample tested. Marin Analytics, LLC makes no claims as to the efficacy, safety, or other risks associated with any detected or non-detected levels of any compounds reported herein. This Certificate shall not be reproduced except in full without the written approval of Marin Analytics, LLC. Copyright 2023 Marin Analytics, LLC All Rights Reserved.